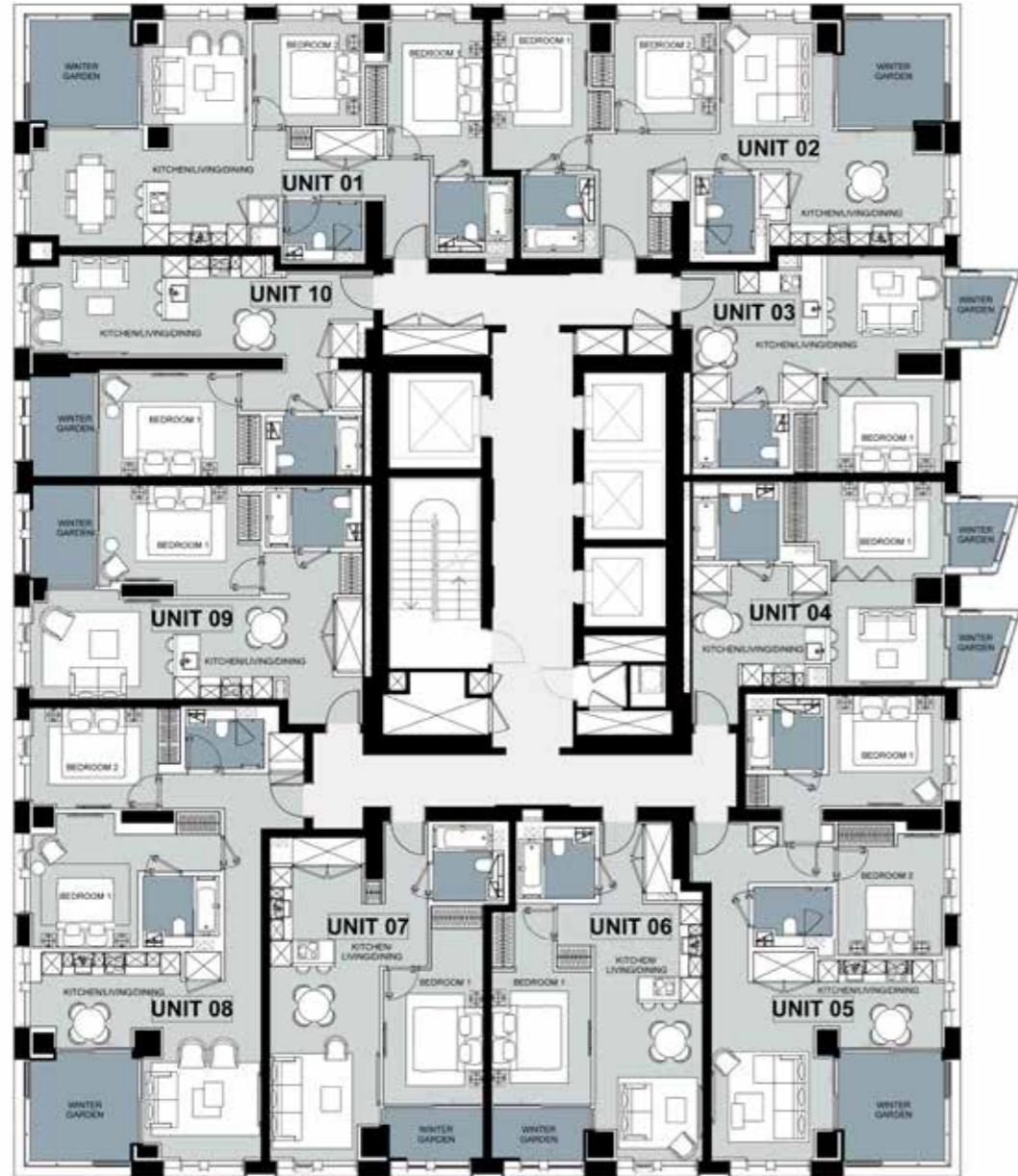


LEVELS 5-7

TYPICAL FLOOR PLANS



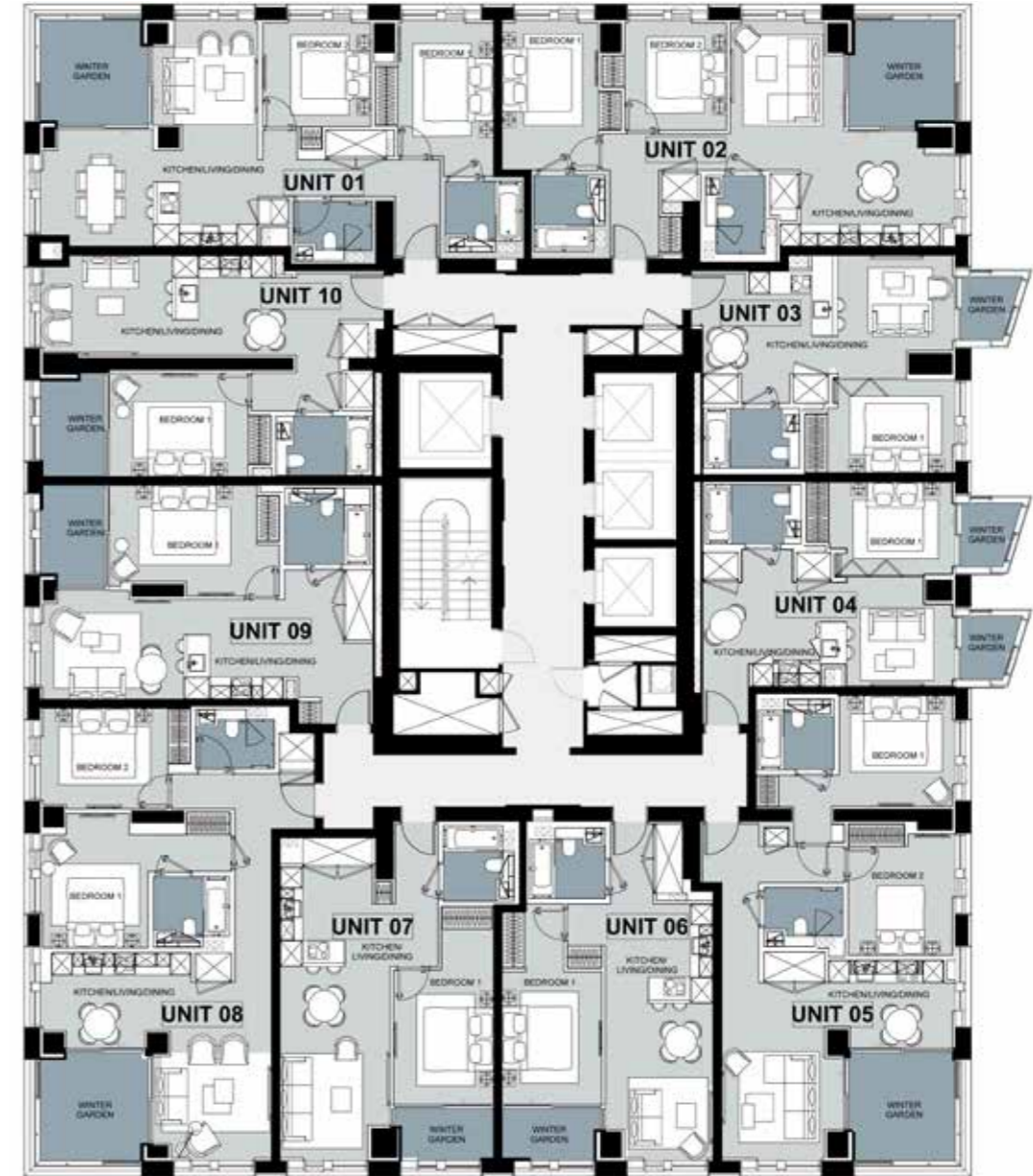
| | UNIT 01 2B-A.1 | UNIT 02 2B-A.2 | UNIT 03 ST-A.1 | UNIT 04 ST-A.2 AC | UNIT 05 2B-B.1 |
|-----------------------|----------------------------------|------------------------------|------------------------------|------------------------------|------------------------------|
| Kitchen/Living/Dining | 9' 9" / 20' 5" x 11' 1" / 21' 3" | 10' 7" / 33' 3" x 21' 3" | 23' 8" x 11' 2" | 23' 8" x 8' 6" | 11' 5" / 22' x 16' 8" |
| Bedroom 1 | 9' x 12' 8" / 14' 7" | 9' 1" x 14' 1" | 12' x 8' 8" | 13' x 8' 7" | 16' 6" x 10' 5" |
| Bedroom 2 | 10' 2" x 10' 1" | 9' 6" x 10' 4" | - | - | 10' 1" x 10' 2" |
| Apartment Area | 839.58 ft ² | 796.53 ft ² | 477.92 ft ² | 475.76 ft ² | 826.67 ft ² |
| Winter Garden | 97.95 ft ² | 97.95 ft ² | 31.22 ft ² | 59.2 ft ² | 101.18 ft ² |
| Total Area | 937.54 ft² | 894.48 ft² | 509.13 ft² | 534.97 ft² | 927.85 ft² |

| | UNIT 06 1B-A.3 | UNIT 07 1B-A.4 | UNIT 08 2B-B.2 | UNIT 09 1B-A.5 | UNIT 10 1B-A.6 |
|-----------------------|------------------------------|------------------------------|------------------------------|------------------------------|------------------------------|
| Kitchen/Living/Dining | 10' 1" x 24' 2" / 32' | 10' 3" / 14' 9" x 27' 7" | 28' 5" x 9' 4" | 28' 5" x 9' 4" | 32' 4" x 9' 4" |
| Bedroom 1 | 9' 4" x 12' 5" / 18' 9" | 9' 3" x 12' 7" / 16' 5" | 15' 2" x 10' 5" | 15' 2" x 10' 5" | 13' 2" x 9' 7" |
| Apartment Area | 542.5 ft ² | 588.79 ft ² | 588.79 ft ² | 588.79 ft ² | 574.79 ft ² |
| Winter Garden | 43.06 ft ² | 43.06 ft ² | 57.05 ft ² | 57.05 ft ² | 55.97 ft ² |
| Total Area | 585.56 ft² | 631.84 ft² | 645.83 ft² | 645.83 ft² | 630.76 ft² |

ALL SPECIFICATIONS, PICTURES, DIAGRAMS, LAYOUTS, PHOTOGRAPHS AND OTHER GRAPHIC MATERIAL USED ARE FOR ILLUSTRATIVE PURPOSES ONLY. LAYOUTS AND INDIVIDUAL FEATURES, SPECIFICATIONS AND ITEMS MAY VARY OR BE SUBSTITUTED FOR REPLACEMENT LAYOUTS, FEATURES, SPECIFICATIONS OR ITEMS OF EQUIVALENT STANDARD AND STYLE. THE ABOVE MATERIAL IS CORRECT AT THE TIME OF PRINT BUT MAY BE SUBJECT TO CHANGE AS NECESSARY AND WITHOUT NOTICE. SPECIFICATIONS ARE INDICATIVE OF THE QUALITY AND STYLE OF THE SPECIFICATION ONLY AND MAY NOT REPRESENT WHOLLY THE ACTUAL SPECIFICATIONS AT THE DEVELOPMENT. SPECIFICATIONS AND GRAPHIC MATERIALS ARE NOT INTENDED TO FORM PART OF ANY CONTRACT OR WARRANTY UNLESS SPECIFICALLY INCORPORATED IN WRITING INTO THE CONTRACT.

LEVELS 12-16

TYPICAL FLOOR PLANS



| | UNIT 01 2B-A.1 | UNIT 02 2B-A.2 | UNIT 03 ST-A.1 | UNIT 04 ST-A.2 | UNIT 05 2B-B.1 |
|-----------------------|----------------------------------|------------------------------|------------------------------|------------------------------|------------------------------|
| Kitchen/Living/Dining | 9' 9" / 20' 5" x 11' 1" / 21' 3" | 10' 7" / 33' 3" x 21' 3" | 23' 8" x 11' 2" | 23' 8" x 9' 8" | 11' 5" / 22' x 16' 8" |
| Bedroom 1 | 9' x 12' 8" / 14' 7" | 9' 1" x 14' 1" | 12' x 8' 8" | 11' 9" x 8' 7" | 16' 6" x 10' 5" |
| Bedroom 2 | 10' 2" x 10' 1" | 9' 6" x 10' 4" | - | - | 10' 1" x 10' 2" |
| Apartment Area | 842.81 ft ² | 800.83 ft ² | 480.07 ft ² | 476.84 ft ² | 827.74 ft ² |
| Winter Garden | 96.88 ft ² | 96.88 ft ² | 29.06 ft ² | 60.28 ft ² | 101.18 ft ² |
| Total Area | 939.69 ft² | 897.71 ft² | 509.13 ft² | 537.12 ft² | 928.92 ft² |

| | UNIT 06 1B-A.3 | UNIT 07 1B-A.4 | UNIT 08 2B-B.2 | UNIT 09 1B-A.5 AC | UNIT 10 1B-A.6 |
|-----------------------|------------------------------|------------------------------|------------------------------|------------------------------|------------------------------|
| Kitchen/Living/Dining | 10' 1" x 24' 2" / 32' | 10' 3" / 14' 9" x 27' 7" | 21' 8" x 9' 1" / 19' 7" | 28' 5" x 9' 4" | 32' 4" x 9' 4" |
| Bedroom 1 | 9' 4" x 12' 5" / 18' 9" | 9' 3" x 12' 7" / 16' 5" | 10' 2" / 18' x 10' 7" | 16' x 10' 5" | 13' 2" x 9' 7" |
| Bedroom 2 | - | - | 12' x 9' 5" | - | - |
| Apartment Area | 538.2 ft ² | 589.86 ft ² | 854.65 ft ² | 579.1 ft ² | 575.87 ft ² |
| Winter Garden | 43.06 ft ² | 41.98 ft ² | 101.18 ft ² | 55.97 ft ² | 57.05 ft ² |
| Total Area | 581.25 ft² | 631.84 ft² | 955.83 ft² | 635.07 ft² | 632.92 ft² |

ALL SPECIFICATIONS, PICTURES, DIAGRAMS, LAYOUTS, PHOTOGRAPHS AND OTHER GRAPHIC MATERIAL USED ARE FOR ILLUSTRATIVE PURPOSES ONLY. LAYOUTS AND INDIVIDUAL FEATURES, SPECIFICATIONS AND ITEMS MAY VARY OR BE SUBSTITUTED FOR REPLACEMENT LAYOUTS, FEATURES, SPECIFICATIONS OR ITEMS OF EQUIVALENT STANDARD AND STYLE. THE ABOVE MATERIAL IS CORRECT AT THE TIME OF PRINT BUT MAY BE SUBJECT TO CHANGE AS NECESSARY AND WITHOUT NOTICE. SPECIFICATIONS ARE INDICATIVE OF THE QUALITY AND STYLE OF THE SPECIFICATION ONLY AND MAY NOT REPRESENT WHOLLY THE ACTUAL SPECIFICATIONS AT THE DEVELOPMENT. SPECIFICATIONS AND GRAPHIC MATERIALS ARE NOT INTENDED TO FORM PART OF ANY CONTRACT OR WARRANTY UNLESS SPECIFICALLY INCORPORATED IN WRITING INTO THE CONTRACT.