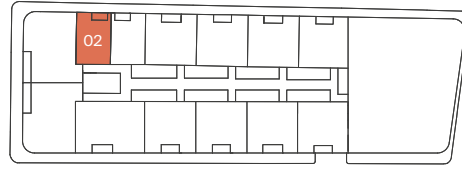


1 Bedroom Apartment & Study Mirrored

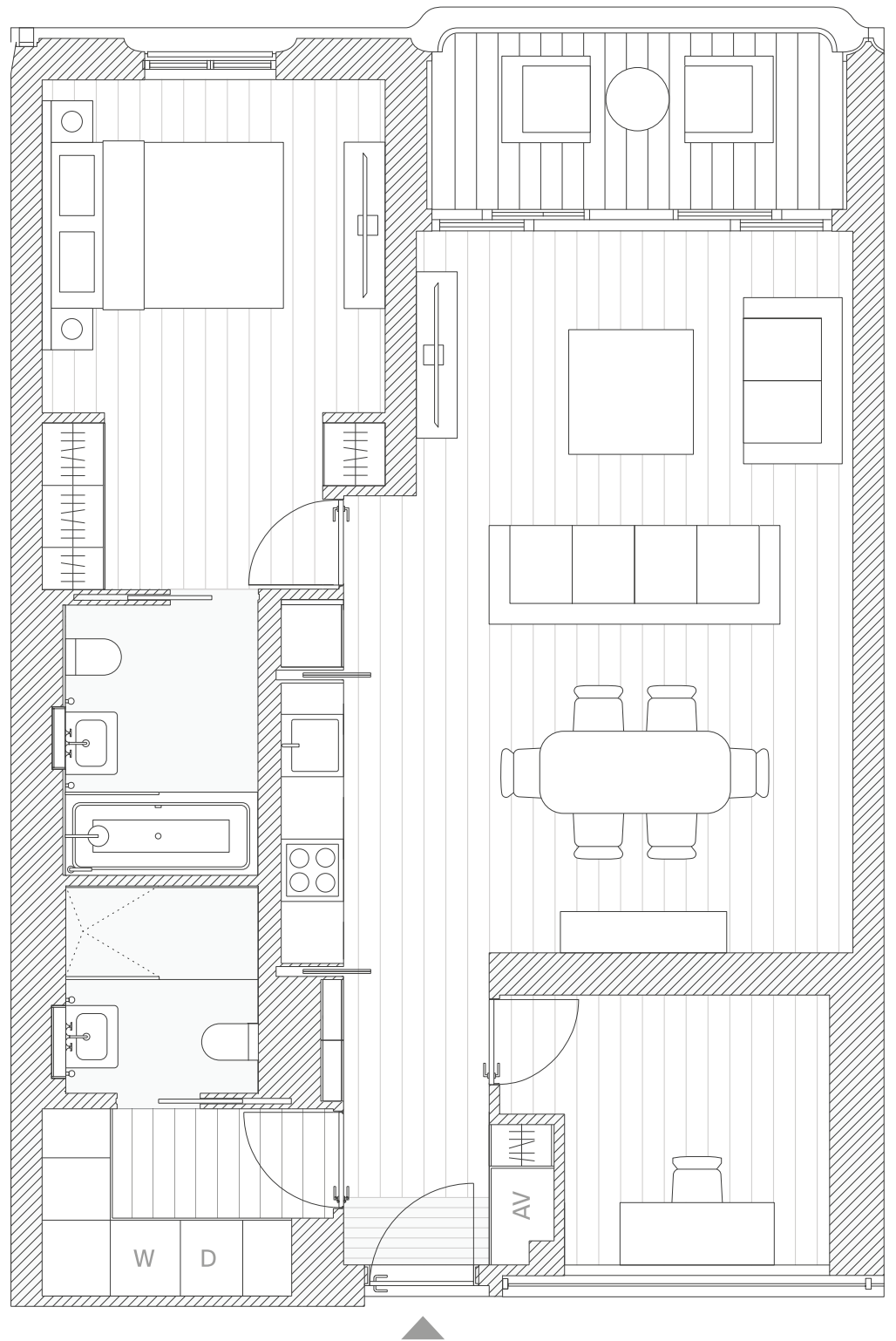
FLOOR PLANS



Floors 1, 2 & 3



Living/kitchen/dining	4.9m × 6.9m
Master bedroom	3.3m × 2.9m
Master bathroom	1.8m × 2.6m
Study	2.6m × 2.5m
Guest bathroom	1.8m × 2.0m
Total *	83m ²
	893sqft
Balcony *	6.0m ²
	60sqft



*All floor plans are draft and subject to change